

# COUNTY OF SONOMA MADF

## MALE SPECIAL MOD VISITING MODIFICATIONS

PROJECT No. 6914

2777 VENTURA AVENUE  
SANTA ROSA, CALIFORNIA 95403-2226



MARK	DATE	DESCRIPTION

**Lemmon-Woodruff Architecture, Inc.**  
ARCHITECTURE, PLANNING AND DEVELOPMENT

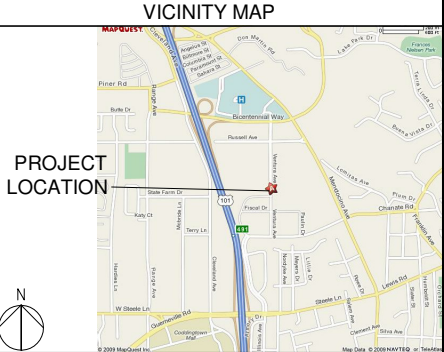
826 St. Helena Avenue  
Santa Rosa, CA 95404  
Tel: 707-578-6393  
Fax: 707-578-4738  
www.lwarch.com

ABBREVIATIONS	
#	And
#	Number, Pound
Ø	Diameter, Phase
AB	Anchor Bolt
ABV	Above
AC	Ac
ACQ	Ac
ACOUST	Acoustical
AD	Area Drain
ADJ	Adjustable, Adjacent
ADJL	Additional
AF	Above Finished Floor
AGG	Aggregate
ALUM	Aluminum
ANOD	Anodized
APPROX	Approximate
ARCH	Architect, Architectural
ASB	Asbestos
ASPH	Asphalt
ATR	All-Threaded Rod
AVC	Average
BD	Board
BETW	Between
BL	Bl
BLUM	Bluminous
BLDC	Building
BLK	Block
BLKG	Blocking
BM	Beam, Bench Mark
BOT	Bottom
BRG	Bearing
BRZ	Bronze
BR	Built-Up Roof
CAB	Cabinet
CANT	Canter
CB	Catch Basin
CBC	California Building Code
CEM	Cement
CER	Ceramic
CF	Cubic Feet
CG	Corner Guard
C	Cost Item
CJ	Control Joint
CS	Cast
CLC	Ceiling
CLDG	Caulking
CLD	Closet
CLR	Clear
CLS	Closer
CMU	Concrete Masonry Unit
CNTR	Counter
CO	Cleanout
COL	Column
COMP	Composition
CONC	Concrete
CONN	Connection
CONST	Construction
CONT	Continuous
CORR	Corridor, Corrugated
CPT	Corplet
CSK	Countersink
CTR	Center
CY	Cubic Yards
d	Penny (Nail Size)
DBL	Double
DEMO	Demolish
DEPT	Department
BET	Detail
DF	Drinking Fountain
DH	Double Hung
DI	Diameter
DWG	Diagram
DM	Dimension
DISP	Dispenser
DW	Down
DN	Down
DO	Door Opening
DR	Door
DS	Downspout
DTO	Drain To Outside
DWC	Drawing
DWR	Drawer
(E)	Existing
EA	Each
EB	Expansion Bolt
EE	Each End
EFS	Each Face
EHS	Each Head and Fish System
EJ	Expansion Joint
ELEC	Electrical
ELV	Elevation
EN	Elevator
ENG	Engineer
EPDM	Ethylene Propylene Diene Monomer
EQ	Equal
EQT	Equipment
ES	Each Side
EW	Each Way
EWC	Electric Water Cooler
EXP	Expansion
EXPT	Exposure
EXT	Exterior
FAB	Fabricate
FA	Fire Alarm
FAC	Fire Alarm Control Panel
FACP	Fire Alarm Control Panel
FBO	Furnished By Others
FD	Floor Drain
FDN	Foundation
FE	Fire Extinguisher
FEC	Fire Extinguisher Cabinet
FF	Fiberglass
FGL	Fire Hose Cabinet
FHC	Fire Hose Cabinet
FHS	Fire Hose Station
FHS	Fire Hose Station
FIN	Finish
FIX	Fixed
FMT	Fixture
FL	Floor Line
FLB	Floor
FLSHG	Flashing
FLUOR	Fluorescent
FN	Face Nail
FO	Face Of
FOC	Face Of Concrete
FOF	Face Of Finish
FOM	Face Of Masonry
FOS	Face Of Stud
FR	Framing
FRM	Foot, Feet
FRM	Footing
FRM	Form
FUT	Future
GA	Galvanized
GALV	Galvanized
GB	Grab Bar
GFCI	Ground Fault Circuit Interrupter
GL	Glass
GLB	Glued-Laminated Beam
GND	Ground
GR	Grade
GYP	Gypsum
HS	Hole, Rip
HC	Hollow Core
HDR	Header
HDW	Hardware
HWND	Hardwood
HGR	Hanger
HM	Hollow Metal
HR	Horizontal
HR	Hour
HR	Hour
HTG	Heating
HTR	Heater
HVAC	Heating, Ventilating & Air Conditioning
ID	Inside Diameter
INF	Information
INSUL	Insulation
INT	Interior
JAN	Janitor
JST	Joint
JT	Joint
KIT	Kitchen
L	Angle
T&G	Tongue & Groove
LAB	Laboratory
LAM	Laminated, Laminated
LAV	Lavatory
LP	Lined, Lined
LN	Linear
LOC	Location, Locations
LT	Light
LTC	Lighting
MAX	Maximum
MB	Machine Bolt
MCB	Machine Cabinet
MCH	Mechanical
MEMB	Membrane
MFR	Manufacturer, Manufactured
MIN	Minimum
MIS	Miscellaneous
MIS	Miscellaneous
MO	Masonry Opening
MNT	Mounted
MPL	Mounting Plate
(N)	New
NAT	Natural
NIC	Not In Contract
NO	Number
NTS	Not To Scale
OA	Overall
OC	On Center
OD	Outside Diameter
OH	Overhead
OPND	Opening
OPP	Opposite
OPT	Optional
PERP	Perpendicular
PLAS	Plastic
PLMB	Plumbing
PLYWD	Plywood
PNL	Panel
PS	Pair
PREFAB	Prefabricated
PRELIM	Preliminary
PSF	Pounds per Square Foot
PSI	Pounds per Square Inch
PT	Point
PTD	Paper Towel Dispenser
PTN	Partition
PTC	Paper Towel Receptacle
PVC	Polyvinyl Chloride
QTY	Quantity
R	Riser, Risers, Radius
RAD	Radius
RD	Roof Drain
REBAR	Reinforcing Bar
REF	Reference
REFR	Refrigerator
REIN	Reinforcement, Reinforce
REQ	Required
RESL	Resilient
RHMS	Round Head Machine Screw
RHS	Round Head Wood Screw
RM	Room
RO	Rough Opening
RWD	Redwood
RWL	Rain Water Leader
SC	Solid Core
SCD	Self Cover Dispenser
SCHED	Schedule
SCL	Structural Composite Lumber
SD	Soap Dispenser
SD	Section
SF	Square Feet
SIL	Single
SH	Shelves, Single Hung
SHR	Shower
SHT	Sheet
SHTG	Sheeting
SM	Similar
SLD	Sliding
SM	Sheet Metal
SNR	Sanitary Nipple Receptacle
SPCS	Spigot
SQ	Square
SS	See Structural Drawings
STD	Standard
STR	Structural
STRCT	Structural
SUSP	Suspend, Suspended
SV	Sheet Vinyl
SYM	Symmetrical
T	Tread
T&G	Tongue & Groove
TB	Towel Bar
TEL	Telephone
TEMP	Tempered
TH	Thick
TN	Toenail
TOP	Top Of
TPH	Toilet Paper Holder
TV	Television
TYP	Typical
UNL	Unless Otherwise Noted
UP	Up
VB	Vapor Barrier
VCT	Vinyl Composition Tile
VERT	Vertical
VF	Verify in Field
VTO	Vent To Outside
VTR	Vent Through Roof
VWC	Vinyl Wall Covering
WC	Water Closet
WC	Water
W	Window
WP	Waterproof
WSP	Waterproofing
WT	Weight
WTR	Water

SYMBOLS LEGEND	
DETAIL	1 451 — DETAIL NUMBER SHEET NUMBER
SECTION	1 431 — SECTION NUMBER SHEET NUMBER
ELEVATION (VIEW)	1 421 — ELEVATION NUMBER SHEET NUMBER
ELEVATION (INTERIOR)	2 441 3 — ELEVATION NUMBER SHEET NUMBER
ELEVATION (DATUM)	±0' — ELEVATION NUMBER SHEET NUMBER
ROOM NUMBER	ROOM 102
DOOR DESIGNATION	108
WINDOW DESIGNATION	10
KEYNOTE	1

CONSULTANTS	
<b>ARCHITECT:</b>	LEMMON-WOODRUFF ARCHITECTURE, INC. 826 St. Helena Avenue Santa Rosa, CA 95404 Contact: Blaine J Lemmon TELEPHONE: (707) 578-6393 FACSIMILE: (707) 578-4738
<b>STRUCTURAL ENGINEER:</b>	ZFA STRUCTURAL ENGINEERS 1212 Fourth Street, Suite Z Santa Rosa, CA 95404 Contact: Deirdra Dawson TELEPHONE: (707) 526-0992 FACSIMILE: (707) 526-0217
<b>PROJECT MANAGER:</b>	COUNTY OF SONOMA ARCHITECT'S OFFICE Project Manager: Barry Leducq 2300 County Center Drive, Suite A-22 Santa Rosa, CA 95403 TELEPHONE: (707) 565-2847 FACSIMILE: (707) 565-3240

SHEET INDEX	
GO.0	COVER SHEET
A1.0	FLOOR PLANS
A1.1	SECTIONS & DETAILS
BUILDING DATA	
<b>OCCUPANCY GROUP:</b>	I-3
<b>TYPE OF CONSTRUCTION:</b>	IA
<b>ALLOWABLE AREA:</b>	UNLIMITED



CODE COMPLIANCE NOTES	
1.	NO CHANGE IN OCCUPANCY OR ADDITIONAL FLOOR AREA IS PROPOSED FOR THIS PROJECT.
2.	ALL SECURITY IMPROVEMENTS WILL BE REVIEWED AND APPROVED BY THE AUTHORITY HAVING JURISDICTION FOR THE STATE OF CALIFORNIA.

GENERAL NOTES	
1.	ALL WORK IS TO BE PERFORMED PER THE 2007 CBC.

CONSULTANT	

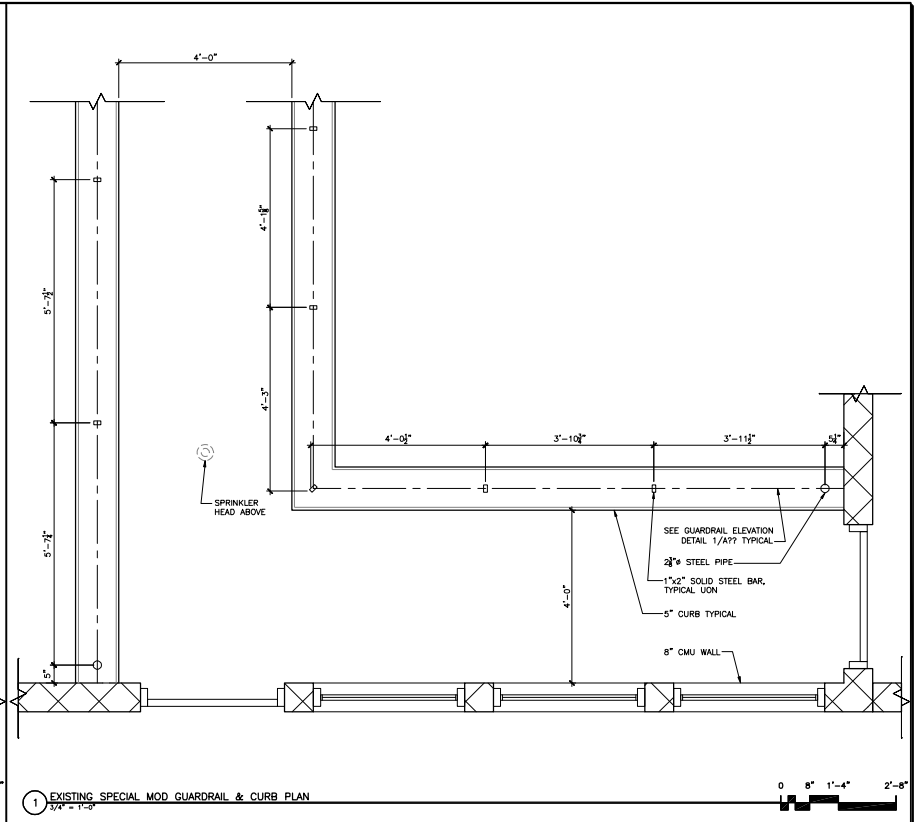
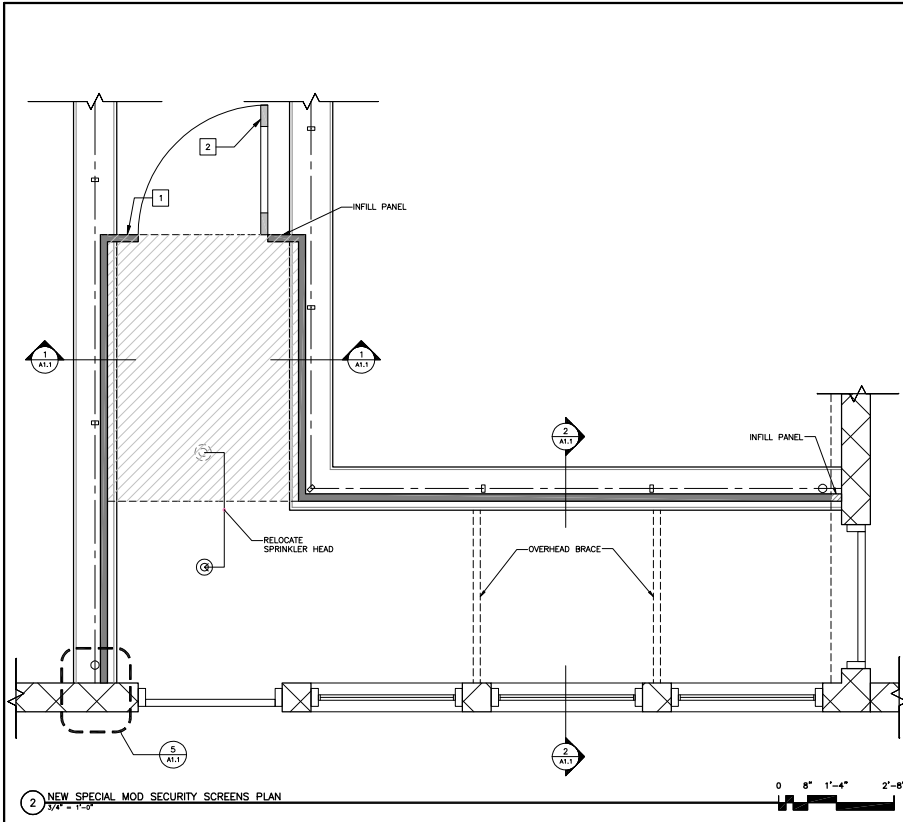
STAMP	

PROJECT FOR	
COUNTY OF SONOMA	MADF
PROJECT NAME	MALE SPECIAL MOD VISITING MODIFICATIONS
PROJECT ADDRESS	2777 Ventura Ave Santa Rosa CA

SHEET TITLE	
COVER SHEET	

OWNER'S PROJECT NUMBER	
6914	
PROPERTY NUMBER	DEVELOPMENT NUMBER


DRAWN	CHECKED
EP	BL
DATE	SHEET NUMBER
3/9/2010	
SCALE	
AS SHOWN	
JOB NUMBER	
09-15	
	SHEET - OF -



- FLOOR PLAN NOTES**
1. TIE NEW ELECTRICAL STRIKE INTO SECURITY ELECTRICAL SYSTEM.
  2. 3'-0" X 7'-0" GATE

MARK	DATE	DESCRIPTION

**Lemmon-Woodruff Architecture, Inc.**  
 ARCHITECTURE, PLANNING AND DEVELOPMENT



826 St. Helena Avenue  
 Santa Rosa, CA 95404  
 Tel: 707-578-6398  
 Fax: 707-578-4738  
 www.lwarch.com

CONSULTANT

STAMP

PROJECT FOR  
**COUNTY OF SONOMA  
 MADF**

PROJECT NAME  
**MALE SPECIAL MOD  
 VISITING MODIFICATIONS**

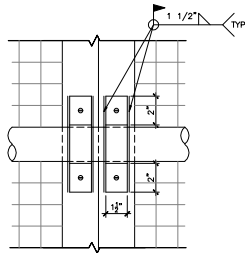
PROJECT ADDRESS  
 2777 Ventura Ave  
 Santa Rosa CA

SHEET TITLE  
**FLOOR PLANS**

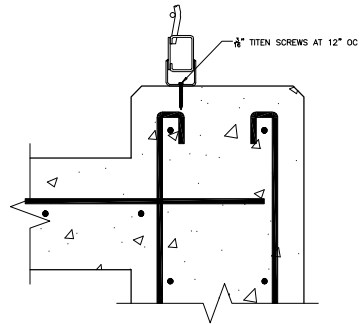
OWNER'S PROJECT NUMBER  
 6914

PROPERTY NUMBER	DEVELOPMENT NUMBER

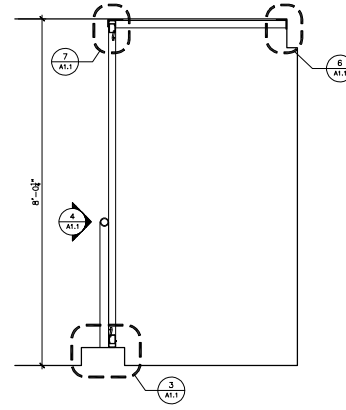
DRAWN EP	CHECKED BL
DATE 3/8/2010	SHEET NUMBER
SCALE AS SHOWN	<b>A1.0</b>
JOB NUMBER 09-15	SHEET - 0F -



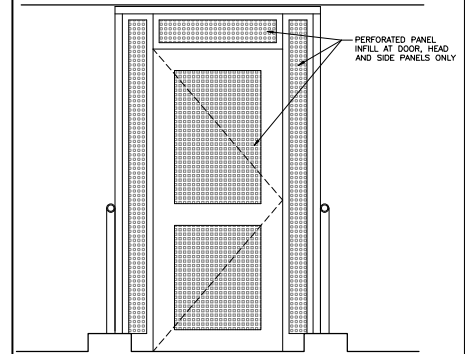
4 ATTACHMENT AT FRAME  
3'-1-0"



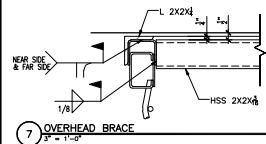
3 ATTACHMENT AT CURB  
3'-1-0"



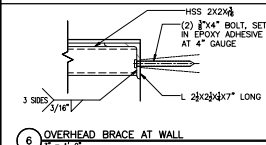
2 SECTION B  
3'-4" = 1'-0"



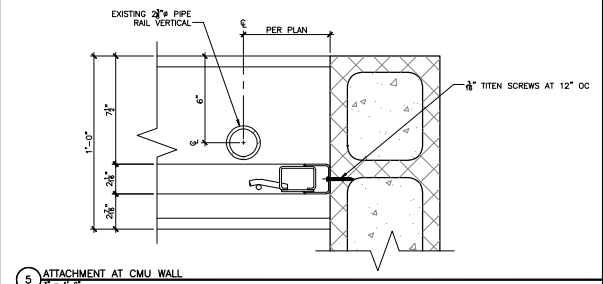
1 SECTION A  
3'-4" = 1'-0"



7 OVERHEAD BRACE  
3'-1-0"



6 OVERHEAD BRACE AT WALL  
3'-1-0"



5 ATTACHMENT AT CMU WALL  
3'-1-0"

MARK	DATE	DESCRIPTION

**Lemmon-Woodruff Architecture, Inc.**  
ARCHITECTURE, PLANNING AND DEVELOPMENT

826 St. Helena Avenue  
Santa Rosa, CA 95404  
Tel: 707-578-6398  
Fax: 707-578-4738  
www.lwarch.com

CONSULTANT

STAMP

PROJECT FOR  
COUNTY OF SONOMA  
MADF

PROJECT NAME  
MALE SPECIAL MOD  
VISITING MODIFICATIONS

PROJECT ADDRESS  
2777 Ventura Ave  
Santa Rosa CA

SHEET TITLE  
**SECTIONS & DETAILS**

OWNER'S PROJECT NUMBER 6914	
PROPERTY NUMBER	DEVELOPMENT NUMBER

DRAWN EP	CHECKED BL
DATE 3/9/2010	SHEET NUMBER
SCALE AS SHOWN	<b>A1.1</b>
JOB NUMBER 09-15	SHEET - OF -