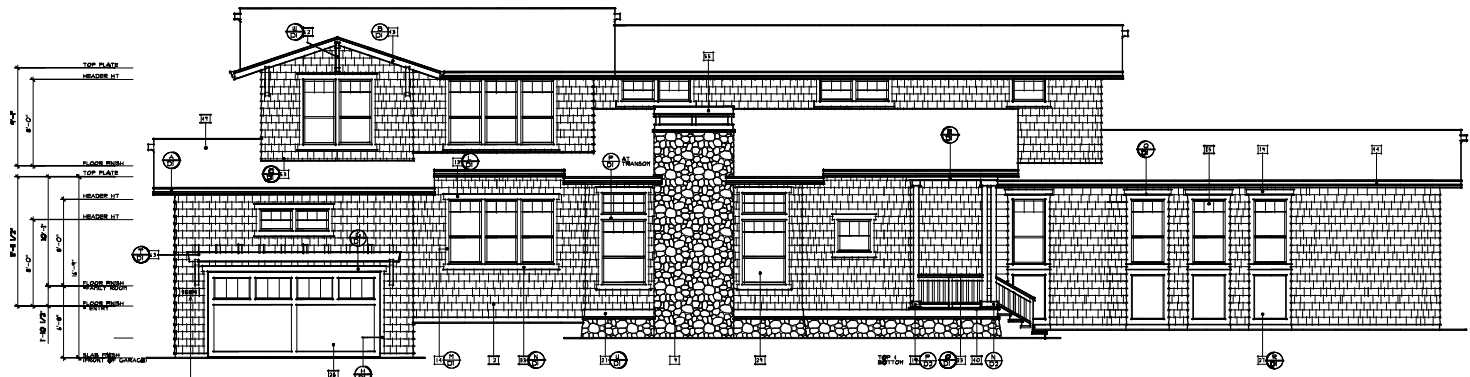




DESIGNED BY	
CHECKED BY	
REVISION	DATE

**FARELL-FABER**  
 ASSOCIATES INC.  
 ARCHITECTS • PLANNERS

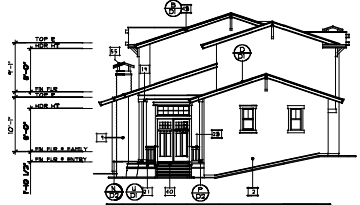
1022 Mendocino Avenue  
 Santa Rosa, California 95401  
 TEL: 707.572.2446  
 FAX: 707.572.2446  
 www.farellfaber.com



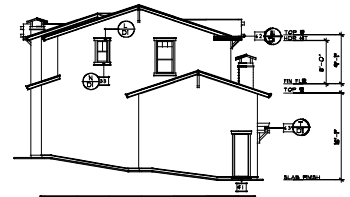
FRONT ELEVATION

- ELEVATION NOTES**
1. X DECORATIVE SHINGLES OVER APPROVED BUILDING PAPER & STRUCTURAL WEATHERING PER SHEAR WALL SCHEDULE "A" (SEE U.O.C.)
  2. ADHESIVE STONE VENEER AT AREAS INDICATED OVER BUILDING PAPER (SEE U.O.C.) SEE SHEET "A" REFS AND U.O.C. REPORT FOR APPLICATION RESTRICTIONS.
  3. 2 X 4 HEADER TRIM (U.O.C.)
  4. 2 X 4 TRIM & CORNER MINERAL TIP
  5. RECESSED WINDOW SET PLAN FOR LOCATIONS
  6. 2 X 4 HORIZONTAL TRIM
  7. 2 X 4 HORIZONTAL TRIM BY 2 X 3 BATTENTABLE
  8. 8000 SECTIONAL GARAGE DOOR
  9. 1/2" INS. PANELED - SEE DETAIL
  10. VINYL TRIM BUNDLES BY PLANTIN BARS @ AREAS INDICATED
  11. FINISH: 1 1/2" INS. STEEL
  12. CONCRETE STOOD
  13. CONCRETE STOOD
  14. CONCRETE STOOD
  15. CONCRETE STOOD
  16. CONCRETE STOOD
  17. CONCRETE STOOD
  18. CONCRETE STOOD
  19. CONCRETE STOOD
  20. CONCRETE STOOD
  21. CONCRETE STOOD
  22. CONCRETE STOOD
  23. CONCRETE STOOD
  24. CONCRETE STOOD
  25. CONCRETE STOOD
  26. CONCRETE STOOD
  27. CONCRETE STOOD
  28. CONCRETE STOOD
  29. CONCRETE STOOD
  30. CONCRETE STOOD
  31. CONCRETE STOOD
  32. CONCRETE STOOD
  33. CONCRETE STOOD
  34. CONCRETE STOOD
  35. CONCRETE STOOD
  36. CONCRETE STOOD
  37. CONCRETE STOOD
  38. CONCRETE STOOD
  39. CONCRETE STOOD
  40. CONCRETE STOOD
  41. CONCRETE STOOD
  42. CONCRETE STOOD
  43. 2 X 8 BARGE BATTEN BY 1 X 8 SHINGLES ROOF OVER
  44. 200" G-DEE" GUTTER OVER 2 X 4 PARCEL BOARD
  45. COMPOSITION SHINGLE ROOF CLASS "A" RATED SHINGLES
  46. 2" X 4 G-DEE FLASHING OR BEAM CORNER SHINGLES @ VALLEYS
  47. 2" X 4 G-DEE FLASHING OR BEAM CORNER SHINGLES @ VALLEYS
  48. 2" X 4 G-DEE FLASHING OR BEAM CORNER SHINGLES @ VALLEYS
  49. 2" X 4 G-DEE FLASHING OR BEAM CORNER SHINGLES @ VALLEYS
  50. 2" X 4 G-DEE FLASHING OR BEAM CORNER SHINGLES @ VALLEYS
  51. 2" X 4 G-DEE FLASHING OR BEAM CORNER SHINGLES @ VALLEYS
  52. 2" X 4 G-DEE FLASHING OR BEAM CORNER SHINGLES @ VALLEYS
  53. 2" X 4 G-DEE FLASHING OR BEAM CORNER SHINGLES @ VALLEYS
  54. 2" X 4 G-DEE FLASHING OR BEAM CORNER SHINGLES @ VALLEYS
  55. 2" X 4 G-DEE FLASHING OR BEAM CORNER SHINGLES @ VALLEYS
  56. 2" X 4 G-DEE FLASHING OR BEAM CORNER SHINGLES @ VALLEYS
  57. 2" X 4 G-DEE FLASHING OR BEAM CORNER SHINGLES @ VALLEYS
  58. 2" X 4 G-DEE FLASHING OR BEAM CORNER SHINGLES @ VALLEYS
  59. 2" X 4 G-DEE FLASHING OR BEAM CORNER SHINGLES @ VALLEYS
  60. 2" X 4 G-DEE FLASHING OR BEAM CORNER SHINGLES @ VALLEYS

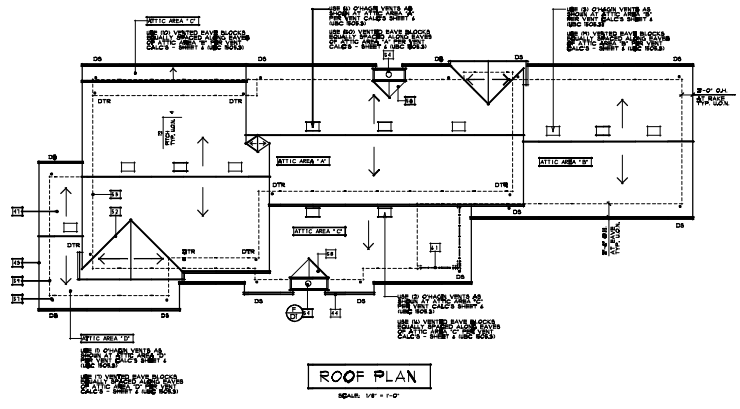
NOTE: ALL EXTERIOR TRIM TO BE 8000 U.O.C.  
 NOTE: DIVERT PLUMBING VENTS TO BACK SIDE OF RIDGE WHEREVER POSSIBLE.



RIGHT SIDE ELEVATION



LEFT SIDE ELEVATION



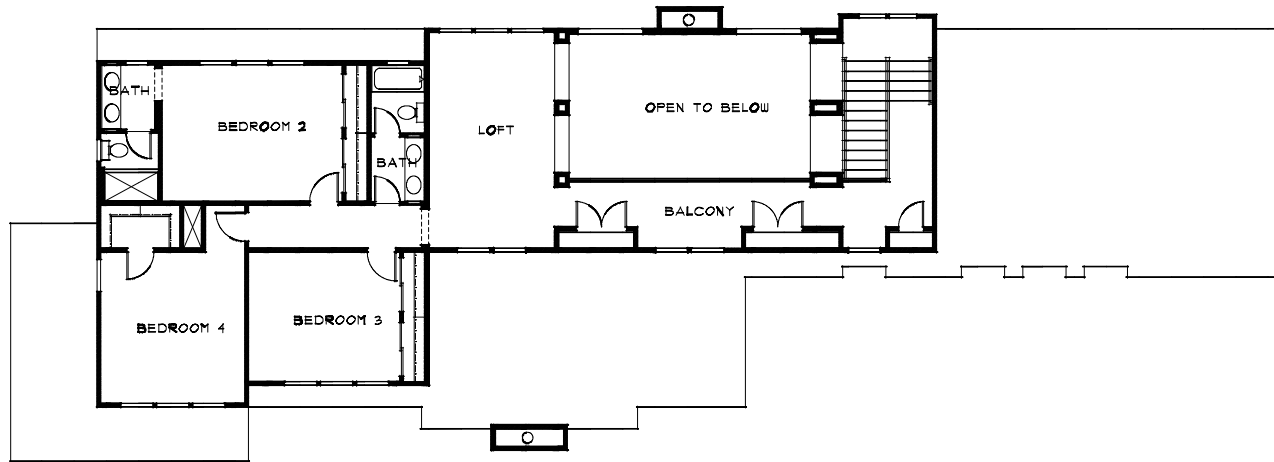
ROOF PLAN



REAR ELEVATION

**TREMBLAY CONSTRUCTION**  
 OLIVOS SUBDIVISION  
 SANTA ROSA, CALIFORNIA





UPPER FLOOR PLAN

NO.	DATE	BY	DESCRIPTION
1	10/03		
2			
3			
4			
5			
6			
7			
8			
9			
10			

**FARRELL-FABER**  
 & ASSOCIATES INC.  
 ARCHITECTS - CALIFORNIA  
 1877 Mendocino Avenue  
 Santa Rosa, California 95407  
 TEL: 707.538.2800  
 FAX: 707.538.2800  
 www.farrellfaber.com

**TREMBLAY CONSTRUCTION**  
 OLIVOS SUBDIVISION  
 SANTA ROSA, CALIFORNIA

JOB NO. DESIGN FOR: **03065**  
 SHEET: **LOT 7**



**ELECTRICAL SYMBOLS**  
NOT NECESSARILY ALL SYMBOLS ON THIS DRAWING

- DUPLEX CONVENIENCE OUTLET
- 1/2 HOT DUPLEX CONV. OUTLET
- FULLY SWITCHED OUTLET
- DIMMER SWITCH
- GROUND FAULT CIRCUIT INTERRUPTER
- GFI
- UNDER COUNTER OUTLET
- 250 VOLT OUTLET
- OUTLET ABOVE FOR GARAGE DOOR OPENER
- CEILING LIGHT FIXTURE
- RECESSED LIGHT (IC RATED)
- RECESSED FLUORESCENT LIGHT (NO DIMMABILITY OR METER)
- WATERPROOF RECESSED LIGHT ON EXTERIOR WALL (SEE PROJECT W/ NOTABLE FOR DAMP LOCATIONS LABEL)
- RECESSED AIRABLE SPOTLIGHT
- BALL MOUNTED LIGHT FIXTURE
- SPOTLIGHT
- FLUORESCENT LIGHT FIXTURE
- SINGLE POLE SWITCH
- THREE WAY SWITCH
- FOUR WAY SWITCH
- DIMMER SWITCH
- 20 AMP GFI DETECTOR W/ 20 AMP GFI OUTLET
- PHONE JACK
- TELEVISION JACK (PRESSURE FOR CABLE)
- 2-1Y AND 2-2-1Y/2-3-1Y/2-4-1Y
- PUSH BUTTON FOR GARAGE DOOR OPENER
- PUSH BUTTON FOR DOOR BELL
- CHIME
- SECURITY SYSTEM PANEL
- SECURITY PAN CABLE OF PROVIDING FIVE (5) WIRE EXCHANGES PER HOUR (W/ BACKLASH)
- THERMOSTAT
- ILLUMINATED ADDRESS SIGN
- ELECTRIC SUB-PANEL
- CABLE/DATA
- ELECTRIC METER
- HOSE REEL WITH NON-REMOVABLE BACKFLOW PREVENTION DEVICE
- JUNCTION BOX
- SPECIALTY OUTLET

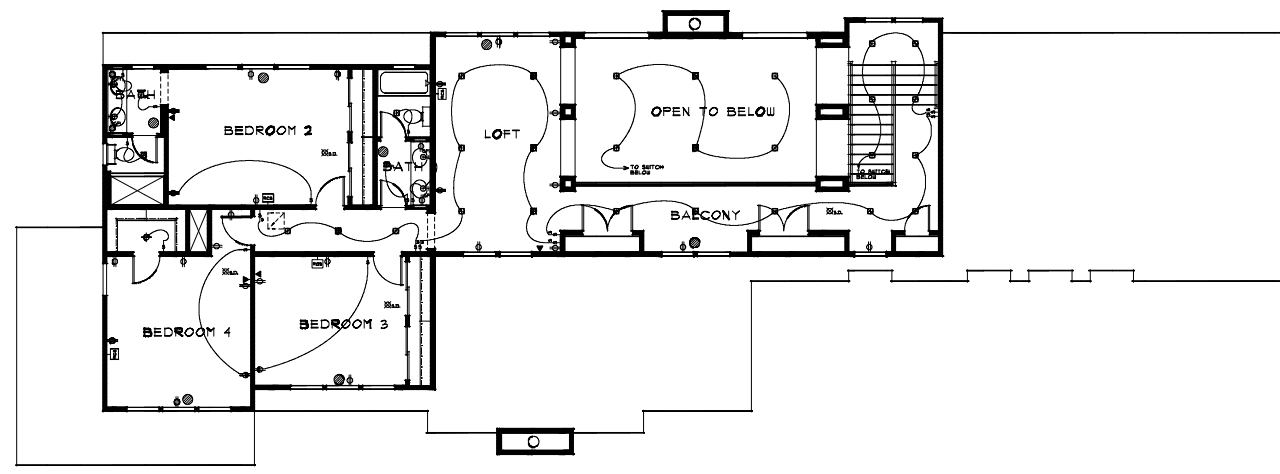
NOTE: PROVIDE 2-20 AMP BRANCH CIRCUITS PER CIRC 240-141 (3, 2, 1) 200-141 200V BRON. LAMPING OR BY OR SEPARATE 20 AMP CIRCUIT TO EACH OUTLET TO BE SEPARATE LIGHT FIXTURES OR LIGHT FIXTURES SHALL BE LISTED AND LABELS IN ACCORDANCE WITH THEIR LISTING.

ALL PULL CHAIN SWITCHES SHALL BE USED WITH DETECTORS IN BEDROOMS (EL. SOUND ALARM) AND CHANGE TO BE ON SEPARATE 20 AMP CIRCUIT PER CALIFORNIA ELECTRICAL CODE.

ALL BRANCH CIRCUITS THAT SERVE DIMMER, CHIMES, AND SECURITY RECEPTACLE OUTLET INSTALLED IN BEDROOMS SHALL BE PROTECTED BY AN ARC-FULTY CIRCUIT INTERRUPTER PER CEC SEC. 240-141.

**MECHANICAL SYMBOLS**  
NOT NECESSARILY ALL SYMBOLS ON THIS DRAWING

- CEILING HEAT REGISTER
  - FLOOR HEAT REGISTER
  - HEAT REGISTER HIGH ON WALL
  - RETURN AIR GRILL IN CEILING
  - RETURN AIR GRILL IN WALL
  - FUEL GAS STUD OUT
  - HOSE REEL WITH NON-REMOVABLE BACKFLOW PREVENTION DEVICE
  - ICE MAKER STUD OUT
  - GAS METER
  - DRYER VENT (TERMINATION OF VENT SECTION 902 AND 903 OF THE I.C.C.)
  - COMBUSTION AIR VENT 6" X 6"
  - RIDER IN WALL
- NOTE: ALL DRYER VENT TERMINATIONS SHALL BE COVERED WITH A METAL SCREEN OF BUILDING QUALITY.
- ALL DRYER CONNECTIONS SHALL BE INSTALLED WITH REGIONAL APPROVED LISTING.
- PROVIDE WEATH-STRIP OR SEAL AT THE ATTIC FLOOR JOIST.



UPPER FLOOR ELECT/MECH PLAN  
SCALE 1/4" = 1'-0"

DESIGN BY: \_\_\_\_\_

CHECKED BY: \_\_\_\_\_

DATE: \_\_\_\_\_

NOTES

1079 Mendocino Avenue  
Santa Rosa, California 95401  
TEL: 707.539.8800  
WWW.FARELL-FABER.COM

**FARELL-FABER & ASSOCIATES INC.**  
ELECTRICAL - PLUMBING

TREMBLAY CONSTRUCTION  
OLIVOS SUBDIVISION  
SANTA ROSA, CALIFORNIA

JOB NO DESIGN FOR: 03045

SHEET 5

LOT 7



